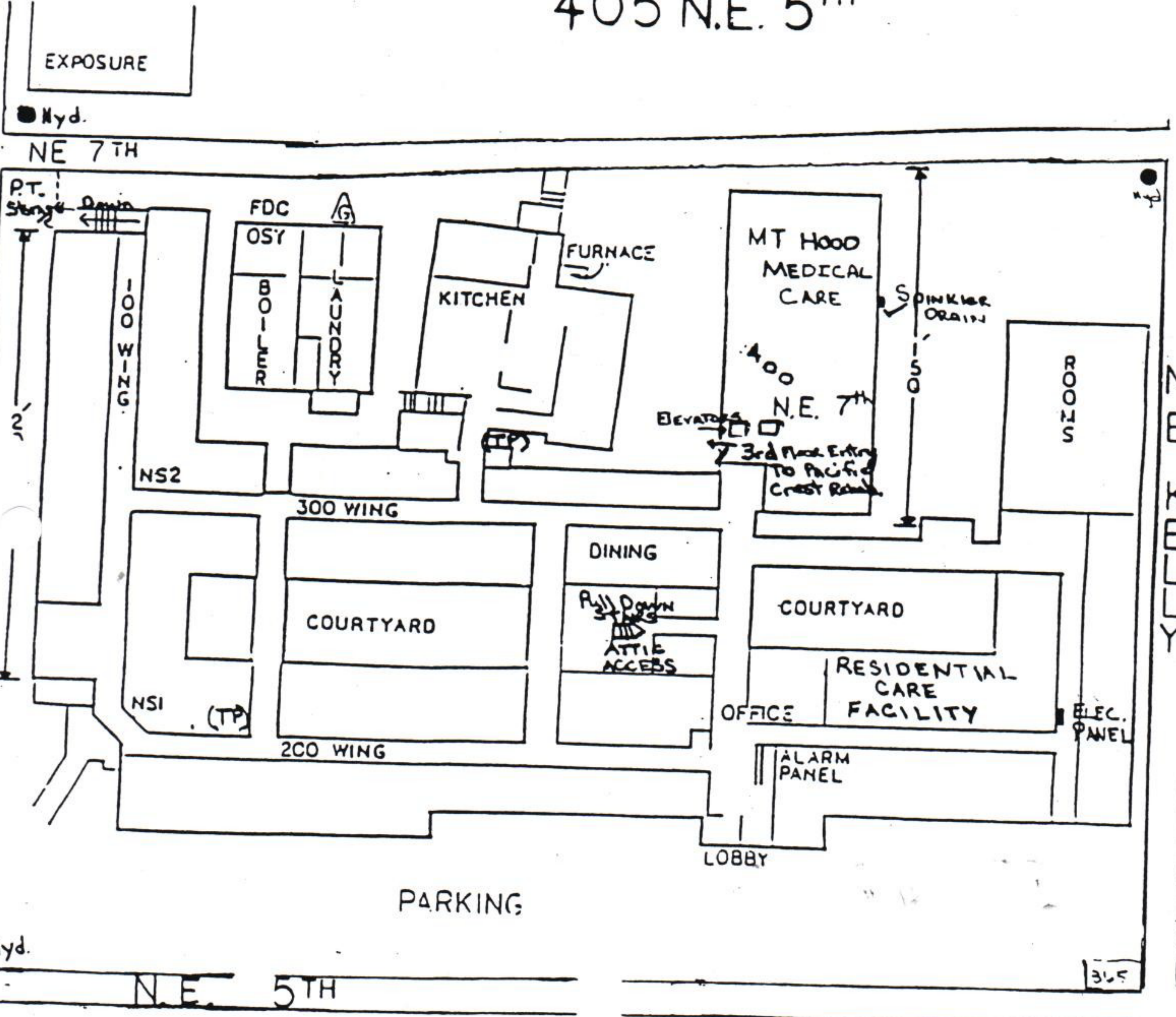




1154

# PACIFIC CREST REHAB. AND SPECIALTY CARE

## 405 N.E. 5<sup>TH</sup>



Staging Area	501 Blg. 7 Blk W
COMMING LOC	501 Blg. 1 Blk. W
LOCK BOX LOC	NONE
Touch Pad (TP)	Combination 9110