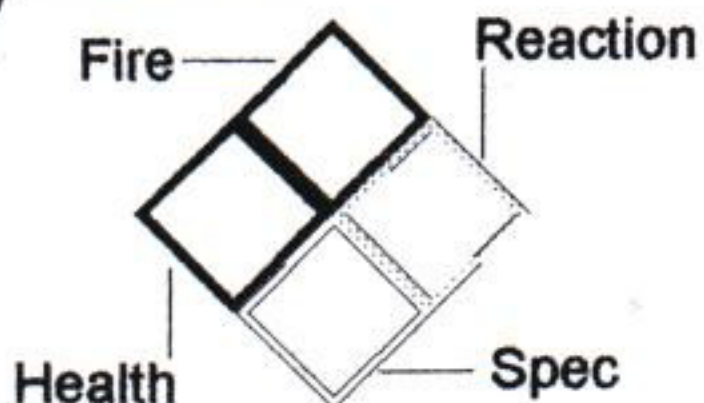


5-97



1. Occ. Name: **HAMPTON INN**

7.

2. Address: **3039 N.E. 181st AVENUE**

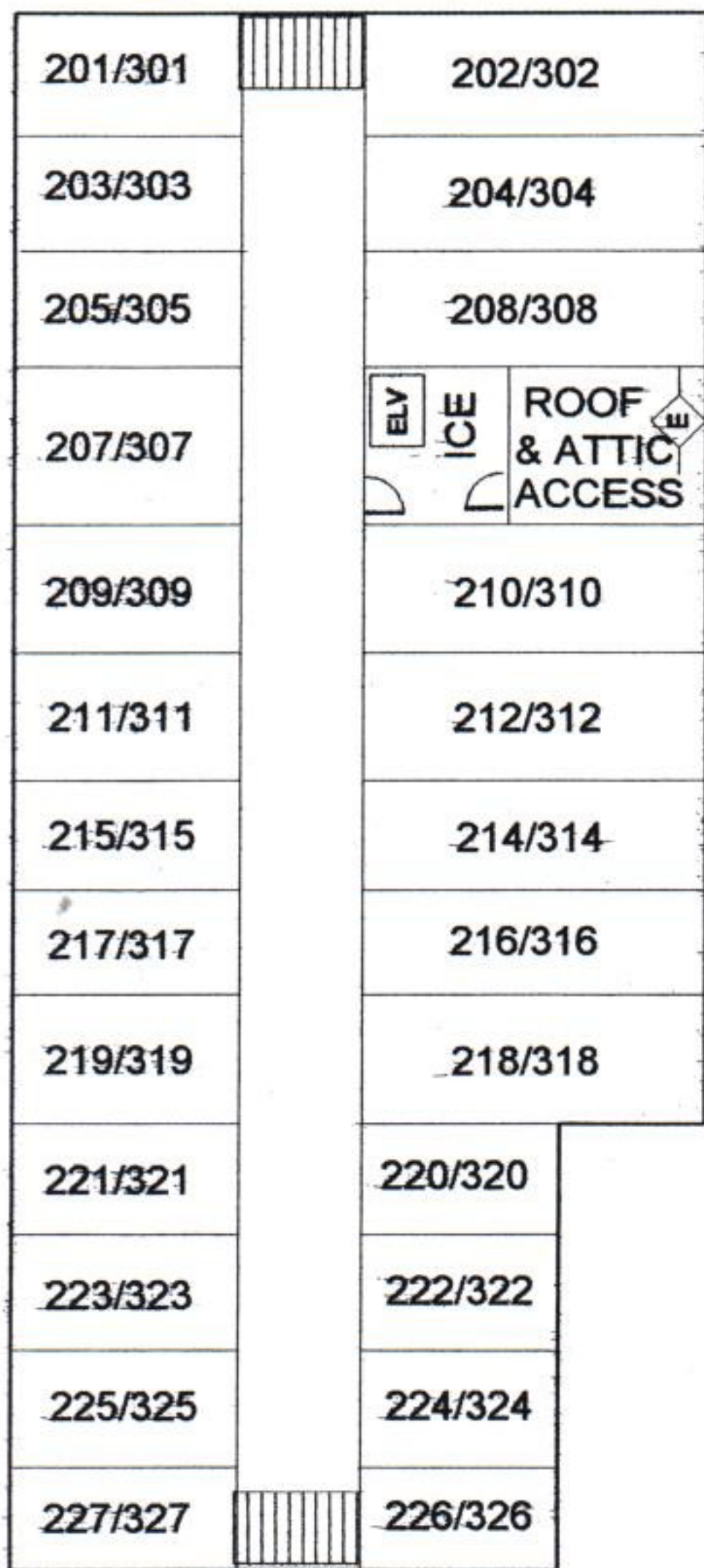


3. Occ Type: **MOTEL**

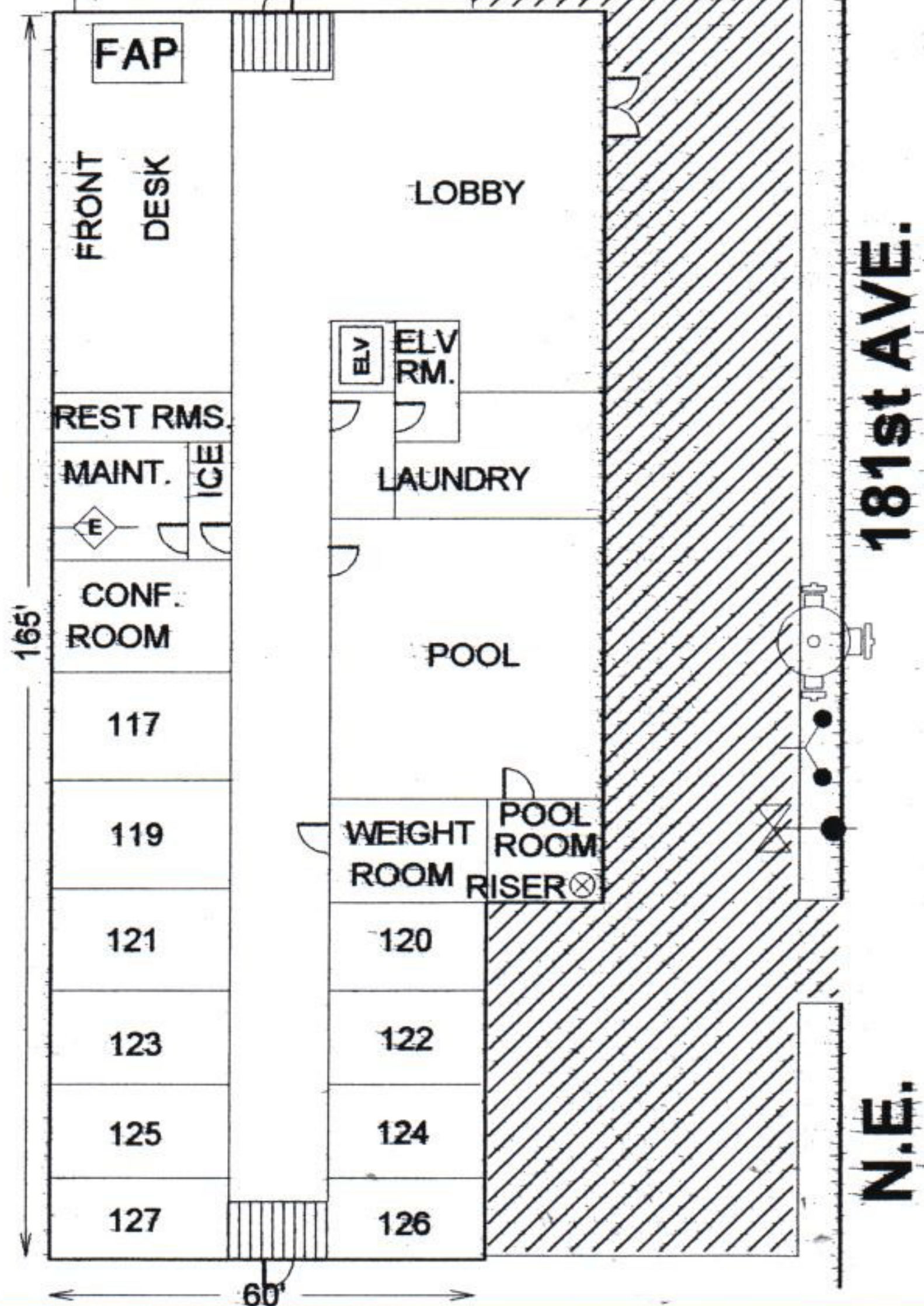
6. Pg 1 of 1

4. Cross St: **SANDY BLVD.** 8. Map # **H-25**

SECOND/THIRD FLOORS



FIRST FLOOR



10. Sprinkler: FDC Location
EAST SIDE OF BLDG, ON 181st

11. Haz Materials
CHLORINE IN POOL ROOM

12. Standpipe: FDC Location
NONE

13. Best Access
N.E. 181st AVE.

14. Bldg Ht. 60' Stories 3 Ft. 15. Bldg Area 29,700 60 Ft. × 165 Ft.

16. Roof Construction Light Heavy Truss _____ Unprotected Steel _____
Heavy Truss _____ Heavy Timber _____ Protected Steel _____ Concrete _____