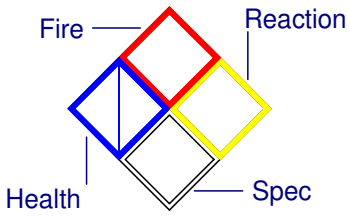


2-98



1. Occ. Name: SHENANDOAH APARTMENTS

7.

2. Address: 1022 N.E. 181st AVENUE

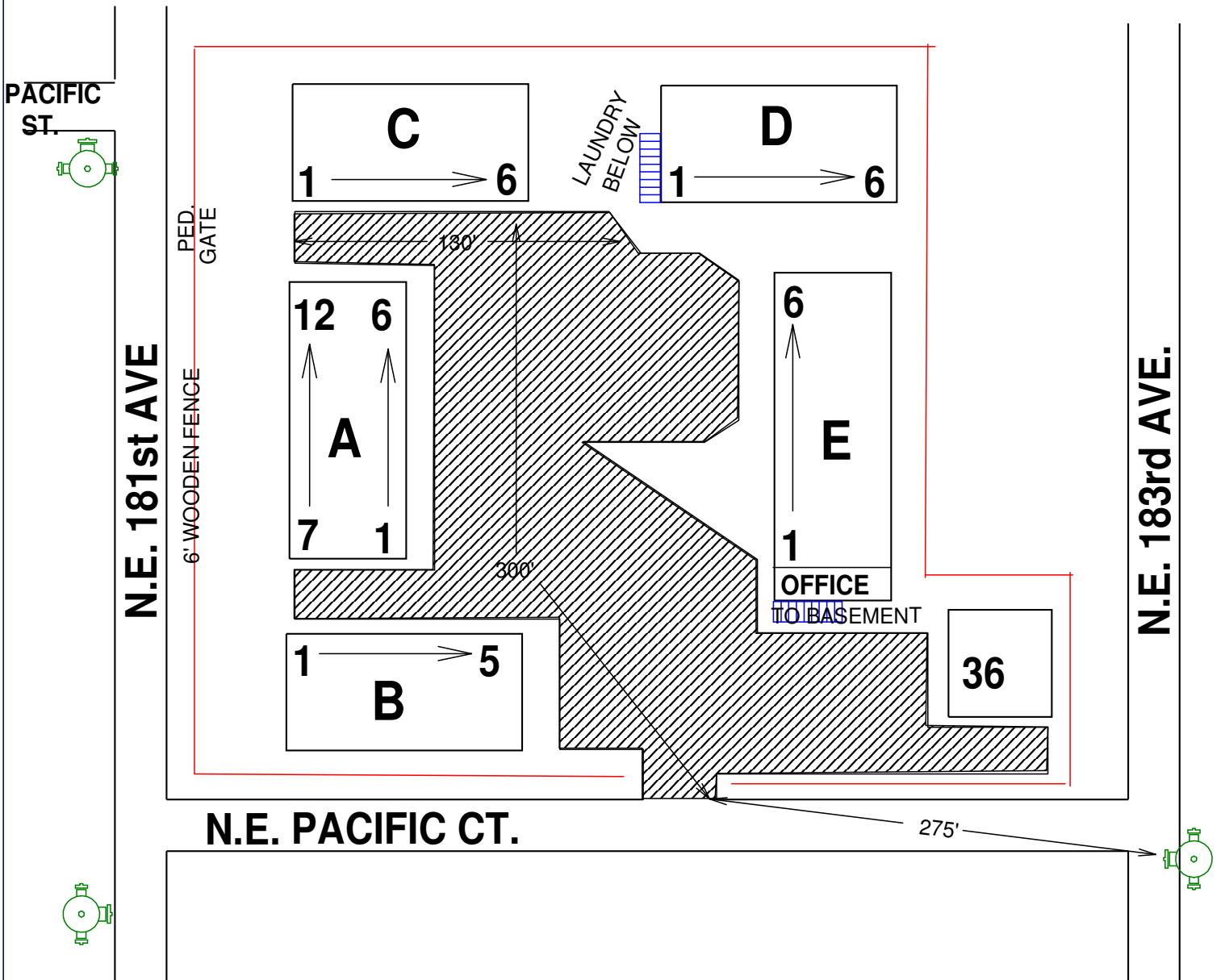


3. Occ Type: APARTMENTS

6. Pg 1 of 1

4. Cross St: N.E. PACIFIC CT.

8. Map # I-26



10. Sprinkler: FDC Location  
**NONE**

11. Haz Materials  
**GENERAL HOUSEHOLD**

12. Standpipe: FDC Location  
**NONE**

13. Best Access **N.E. PACIFIC CT.**  
**NO ACCESS FROM 181st**

14. Bldg Ht. 1-2 Stories 10-20 Ft. 15. Bldg Area x Ft. x x Ft.

16. Roof Construction Light Heavy Truss XX Unprotected Steel \_\_\_\_\_  
Heavy Truss \_\_\_\_\_ Heavy Timber \_\_\_\_\_ Protected Steel \_\_\_\_\_ Concrete \_\_\_\_\_

4148